

PRIME DAILY

October 9, 2025



US Markets Hit Records as AI Stocks Surge, Fed Signals More Cuts

The S&P 500 and Nasdaq closed at record highs on Wednesday, up 0.58% and 1.19% respectively, driven by AI stocks. AMD surged 11% and Dell rose 9% on strong deals and earnings guidance. NVIDIA added over 2% after CEO Jensen Huang highlighted robust AI-driven demand and confirmed an investment in Elon Musk's xAI.

Earnings Season Ahead: Third-quarter earnings begin Thursday with PepsiCo and Delta Air Lines reporting. Major banks and chipmaker ASML will follow next week, setting the stage for a critical earnings period.

Fed Policy: Minutes from the Fed's September meeting showed that most policymakers favour additional easing amid a cooling labour market, though uncertainty remains on how far rates should fall, given persistent inflation. Several officials expressed caution about future cuts this week. Markets expect a 25-basis-point cut in October, with Fed minutes indicating two or more cuts before the end of the year. This dovish stance lifted risk appetite and pushed the VIX down 5.45%.

Commodities & Currency: Gold broke above \$4,000 per ounce—up 53% year-over-year—as investors sought safe havens amid the government shutdown and policy uncertainty. The Dollar Index rallied to 98.90 due to political instability in France and Japan, which pressured commodities. Oil fell 0.67% to \$62.13 per barrel as Trump announced progress on the ceasefire and inventories exceeded expectations, easing geopolitical risk premiums. Bitcoin retreated nearly 1% after hitting \$126,000 early in the week, pressured by the strength of the US dollar and rising bond yields.

Washington Gridlock: Congress remains deadlocked on temporary funding legislation, with Democrats demanding an extension of Obamacare tax credits.

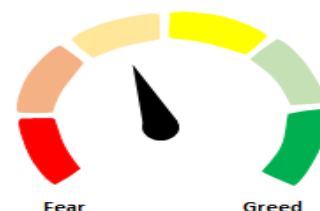
The start of the Earnings season with TCS

In Indian markets, Nifty dropped 0.25% to 25,046 as profit booking and cautious sentiment prevailed ahead of Q2 earnings.

Despite shedding over 200 points from yesterday's high, Nifty successfully managed to hold above both its 5-Day and 20-Day Exponential Moving Averages (DEMA). This resilience is a key technical signal indicating the continuation of the short-term uptrend. Near-term support for the Nifty is now established around 24,900, while the level of 25,220 is expected to offer immediate resistance.

The Indian quarterly results season kicks off today, with market heavyweights TCS set to announce their earnings after market hours. Investors will keenly watch the release for sector cues and outlook as the reporting calendar ramps up.

Indian markets are set to open higher on the back of positive global cues.



Global Equity Indices

	Close	Abs. Change	% Change
Indian Indices			
Sensex	81,774	-153.1 ▼	-0.19%
Nifty	25,046	-62.2 ▼	-0.25%
Midcap	57,867	-422.7 ▼	-0.73%
Small cap	17,891	-92.8 ▼	-0.52%
US Indices			
Dow Jones	46,602	-1.2 ▼	0.00%
S&P 500	6,754	39.1 ▲	0.58%
Nasdaq	23,043	255.0 ▲	1.12%
European Indices			
FTSE	9,549	65.3 ▲	0.69%
DAX	24,597	211.4 ▲	0.87%
CAC	8,060	85.3 ▲	1.07%
Asian Indices			
Shanghai	3,924	40.9 ▲	1.05%
Hang Seng	26,764	-65.5 ▼	-0.24%
Nikkei	48,377	641.5 ▲	1.34%

Indices Futures

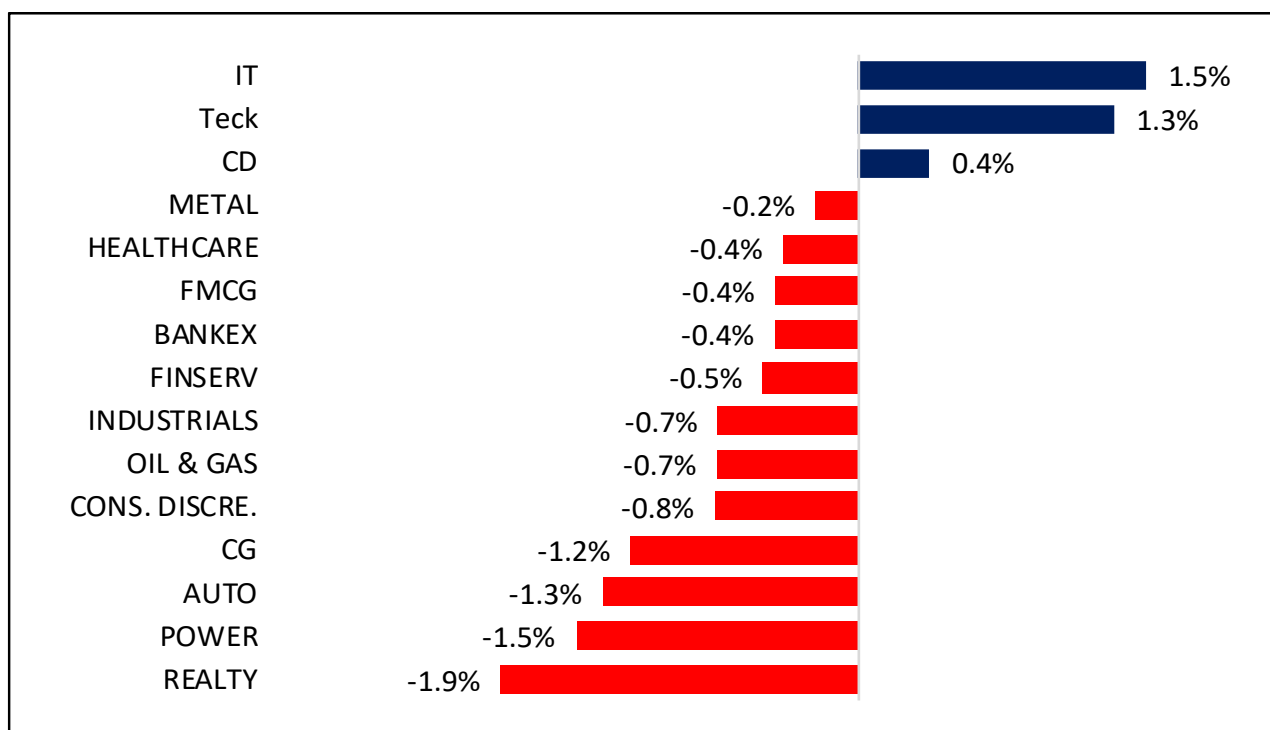
	Close	Abs. Change	% Change
IFSC Nifty			
IFSC Nifty	25,143	19.5 ▲	0.08%
US Indices			
Dow Jones	46,861	-6.0 ▼	-0.01%
S&P 500	6,797	-4.3 ▼	-0.06%
Nasdaq	25,321	-9.8 ▼	-0.04%
European Indices			
FTSE	9,529	-60.3 ▼	-0.63%
DAX	24,701	-45.0 ▼	-0.18%
Asian Indices			
Shanghai	3,924	40.9 ▲	1.05%
Hang Seng	26,764	-65.5 ▼	-0.24%
Nikkei	48,377	641.5 ▲	1.34%

Nifty50 Index Contributors

Top Five (Positive Contributors)		
Stock	Points	% Change
INFY	28.7	0.11
TITAN	13.3	0.05
TCS	11.9	0.05
BHARTIARTL	8.6	0.03
ETERNAL	5.8	0.02

Bottom Five (Negative Contributors)		
Stock	Points	% Change
RELIANCE	-25.7	-0.10
M&M	-12.8	-0.05
HDFCBANK	-12.7	-0.05
ICICIBANK	-8.7	-0.03
TATAMOTORS	-7.5	-0.03

BSE Sectoral Leaders & Laggards



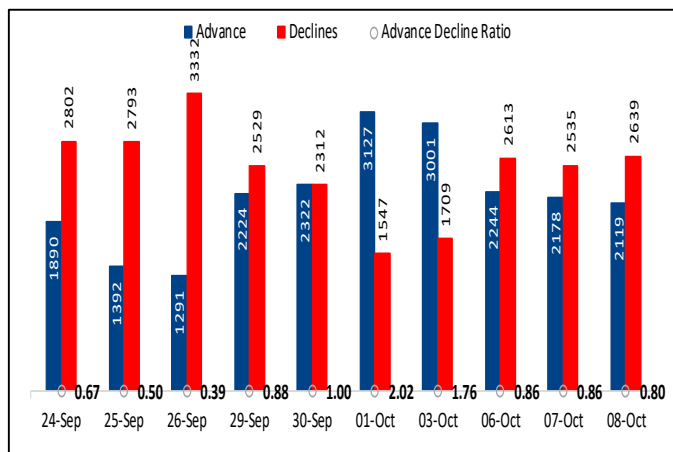
Nifty50 Index Top Pops & Drops

Nifty50 Top Five Gainers			
Symbol	LTP	% Change	Volume
TITAN	3565.6	4.31	4,531,362
INFY	1495.0	2.50	4,657,192
TCS	3027.2	1.80	4,121,889
HCLTECH	1453.2	1.38	200,817
TECHM	1458.2	1.34	1,154,614

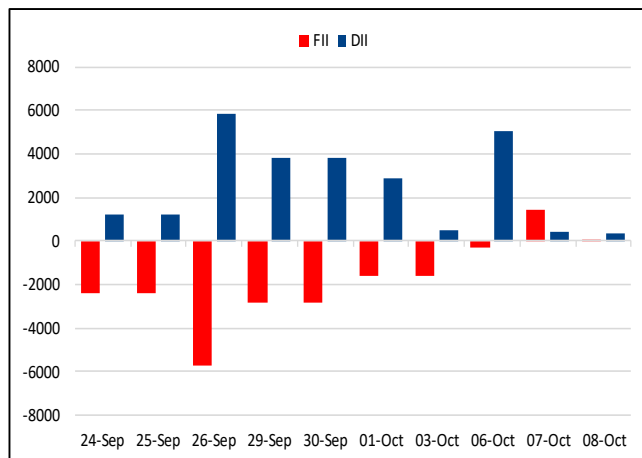
Nifty50 Top Five Losers			
Symbol	LTP	% Change	Volume
TATAMOTORS	681.6	-2.36	16,568,975
M&M	3426.5	-1.90	1,444,911
HEROMOTOCO	5512.5	-1.83	789,561
JIOFIN	304.7	-1.69	7,853,613
BEL	403.7	-1.62	8,668,516



BSE Advance & Declines



Institutional Activities



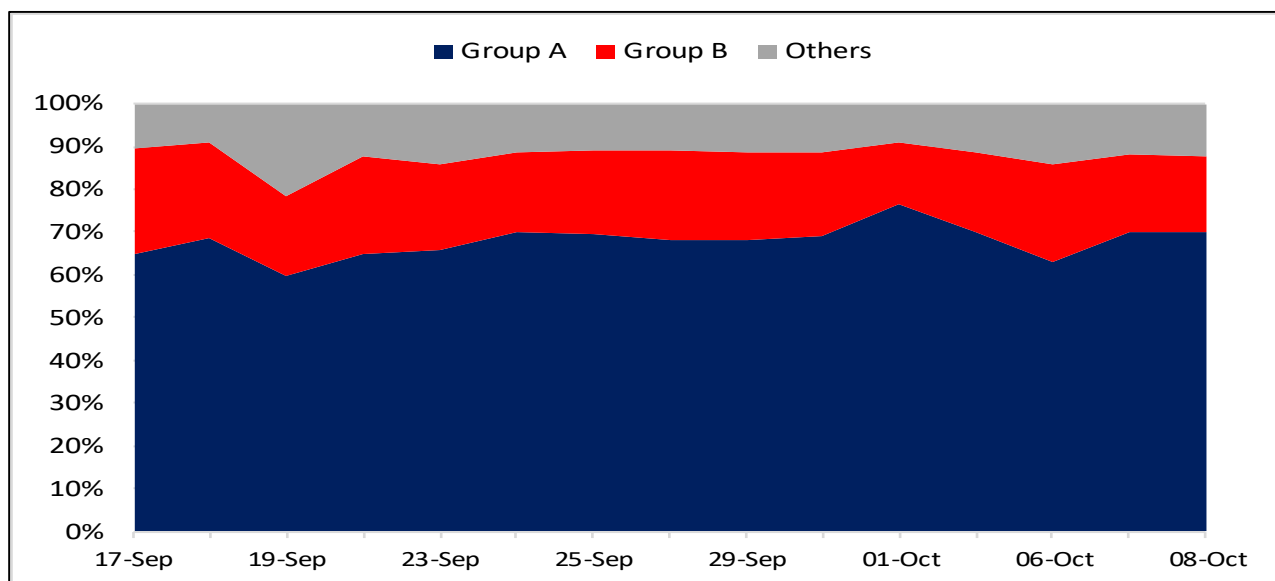
52 Week High Stocks

	08-Oct-25	07-Oct-25
BSE Universe	252	262
BSE Group A Stocks Hitting 52 Week High		
Stocks	Price	52 Week High
ASTERDM	699.5	705.8
CANBK	126.1	128.7
GABRIEL	1313.9	1386.5
HEROMOTOCO	5514.2	5657.4
INDRAMEDCO	552.7	625.5




52 Week Low Stocks

	08-Oct-25	07-Oct-25
BSE Universe	156	147
BSE Group A Stocks Hitting 52 Week Low		
Stocks	Price	52 Week Low
AURIONPRO	1090.5	1,083.6
CHEMPLASTS	365.7	360.2
CLEAN	1051.9	1,049.0
CMSINFO	384.3	358.35
EASEMYTRIP	7.98	7.92

BSE Cash Market Turnover Participant-wise



News Highly Sensitive to Stock Price

Impact	Stock	News
	Solar Industries	Solar Industries India announced that it has secured an order worth Rs 483 crore from South Eastern Coalfields (SECL), a subsidiary of Coal India, for the supply of bulk explosives. The order will be executed over a period of two years and involves the supply of bulk explosives to support SECLs mining operations.
	Container Corporation of India	Container Corporation of India Ltd. reported an increase in physical volumes handled for the quarter ended September 2025, with a total throughput of 10,93,453 TEUs reflecting a 10.24% growth compared to the same quarter last year.
	Ajmera Realty	The company announced quarterly sales of Rs 720 crore for Q2 FY26, which is an increase of 184% as compared with the sales of Rs 254 crore recorded in Q2 FY25. The total sales volume for Q2 FY26 added up to 2,29,772 square feet, up by 101% from the volume of 1,14,046 square feet registered in for Q2 FY25. Collections for the quarter aggregated to Rs 220 crore, up 66% YoY.

Stock	News
TCS Q2FY26 result preview	<p>In rupee terms, TCS Ltd is likely to report 2.5% QoQ and 1.2% YoY revenue growth to Rs 65,045 crore. In US\$ terms, revenue could rise by 0.5% QoQ and it could fall by 2.7% YoY to US\$7,459 mn in Q2FY26. Net profit could decrease by 3.2% QoQ and it could rise by 3.7% YoY to Rs 12,347 crore in Q2FY26. EBIT margin could decrease by 10 bps QoQ and increase by 30 YoY to 24.4%.</p> <p>The management could comment on demand environment in the US, updates on BFSI, Technology & Services verticals, TCV (Total Contract Value) including AI, data analytics, and digital innovation, status of BSNL deal, margins outlook, and update on allotment of H-1B visa.</p>
Lloyds Metals & Energy Ltd.	Lloyds Metals & Energy Ltd. gets CCI nod for 49.99% stake acquisition in Thriveni Pellets Pvt. Ltd.
Bharti Airtel	Bharti Airtel raised concerns about increasing regulatory overreach in the telecom sector despite its limited role in areas such as digital trust and security.
Oil and Gas	Indian refiners anticipate increasing oil imports from Russia in the coming months. This comes as trade discussions with Washington continue without resolution and discounts on Russian crude widen. Ship-tracking data indicates a rise in arrivals for the current month. India has signaled its intention to continue purchasing Russian oil based on price
Tata Elxsi Q2FY26 result preview	In rupee terms, Tata Elxsi could report 2.4% QoQ revenue growth to Rs 913 crore and revenue could fall by 4.4% YoY. Net profit could rise by 7.7% QoQ and it could fall by 32% YoY to Rs 155 crore in Q2FY26. EBIT margin could increase by 30 bps QoQ and it could ramp down by 650bps YoY to 18.5%.
GR Infra	Company has received Letter of Acceptance from State Highways Authority of Jharkhand. This is an EPC Project for Construction of Giridih Bypass (towards Tundi) road (Total Length 26.672 Km.) by State Highways Authority of Jharkhand for a contract price of Rs. 290.23 cr.
ABB	ABB announced it has signed an agreement to divest its Robotics division to SoftBank Group Corp. (TSE: 9984, SoftBank Group) for an enterprise value of \$5.375 billion and not pursue its earlier intention to spin-off the business as a separately listed company. The transaction is subject to regulatory approvals and further customary closing conditions and is expected to close in mid-to-late 2026.

Stock	News
Saatvik Green Energy	<p>Revenue for the quarter surged 272.2% YoY at Rs 915.7 crore. EBITDA was up 444% YoY at Rs 177 crore. Net profit increased 457.7% YoY at Rs 118.8 crore. Finance cost increased 186% YoY at Rs 19 crore.</p> <p>Company has robust strong order book of 4.05 GW as on June, 2025. Capacity Expansion: Phase 1 of the 4 GW Odisha facility remains on schedule for commissioning by Q4FY26.</p> <p>Saatvik Green Energy launched the UDAY Series, its first line of on-grid solar inverters. It marks a strategic shift from module manufacturing to comprehensive solar solutions for homes, businesses, and industries.</p>
Lupin Ltd.	<p>Lupin announced its plans for a new pharmaceutical manufacturing plant in Coral Springs, a significant step in safeguarding the health and safety of Florida families and the nation. With a projected cumulative investment of US\$ 250 million, including research & development, infrastructure and capital expenditures over a five-year period, the new site will have the capacity to accommodate the production of more than 25 critical respiratory medicines, including lifesaving albuterol inhalers for children with asthma and service members at home and overseas.</p>
HFCL Ltd.	<p>Company has secured export orders worth ~US\$ 34.19 million (Rs 303.35 crore), for the supply of optical fiber cables, through its overseas wholly owned subsidiary, from a renowned international customer.</p>
Garuda Construction	<p>Garuda Construction and Engineering Ltd has received orders worth of Rs 143.96 crores, from Orbit Ventures Developers for civil Work of redevelopment project Shikhar-B at Oshiwara, Mumbai.</p> <p>Total order book of the company stands at Rs 3,229.8 crores (approx.) as on date.</p>
Centum Electronics and GRSE	<p>Centum Electronics Limited has signed a Memorandum of Understanding (MoU) with Garden Reach Shipbuilders & Engineers Limited (GRSE). This MoU establishes a collaborative framework between Centum and GRSE which is aimed at joint R&D of Advanced Naval Navigation Systems.</p>
Concord Biotech	<p>Company announced the successful completion of NAFDAC inspection (National Agency for Food and Drug Administration) at Oral Solid Dosage (OSD) Unit-2, facility located at Valthera, Gujarat. The inspection was conducted from October 06, 2025 to October 07, 2025.</p>

Stock	News
JSW Cement	<p>JSW Cement has commissioned vide its subsidiary Shiva cement, a new state-of-the-art cement grinding unit at Sambalpur in Odisha.</p> <p>In keeping with the company's strategy to strengthen its market presence in eastern India with an objective of meeting the growing demand in the region, the new facility has been funded and supervised by its majority-owned subsidiary Shiva Cement, vide a commercial arrangement with Bhushan Power and Steel Limited (BPSL), with a capacity to produce 1.0 MTPA exclusively for use and consumption by Shiva Cement.</p>
Pace Digitek	<p>Pace Digitek announced the award of an operation and maintenance (O&M) contract valued at Rs185.87 crore from Tata Teleservices starting October 2025. This entrusts Pace Digitek with full O&M responsibilities for the complete Managed Services including Outside Plant (OSP) Fiber Network Field Operations and Inside Plant (ISP) Operations</p>
Prestige Estate	<p><u>Q2FY26 Business Update:</u> Prestige Estates Projects Ltd reported robust performance in the September quarter, with sales surging 50% year-on-year to Rs 6,017 crore and collections rising 55% to Rs 4,212 crore. Sales volume grew 47% to 44.2 lakh square feet, while average realisation improved 8% to Rs 14,906 per square foot.</p>
Senco Gold	<p><u>Q2FY26 Business Update:</u> Senco Gold reported a 6.5% year-on-year (YoY) growth in total revenue for the second quarter (Q2FY26), despite headwinds from record-high gold prices and seasonal factors. For the first half of FY26 (H1FY26), Senco's total revenue grew 17.8% YoY, driven by a 16% increase in retail business and a Same-Store Sales Growth (SSSG) of 7.5%.</p>
Escorts Kubota	<p>The company intends to invest up to Rs 2,000 crore by 2031 in its existing manufacturing and R&D facilities in Haryana, focused on the agriculture and construction equipment sector.</p>
EPL Ltd	<p>The company updated that Anand Kripalu retires as Managing Director and Global CEO effective December 31 and appoints Hemant Bakshi as CEO designate effective Oct. 13.</p>

Key Events

IMF Chief Georgieva Says World Economy Doing 'Better Than Feared'

Global economy is coping with shocks in a better-than-expected manner, but there is a risk that the resilience has not yet been fully tested, International Monetary Fund Managing Director Kristalina Georgieva said on Wednesday.

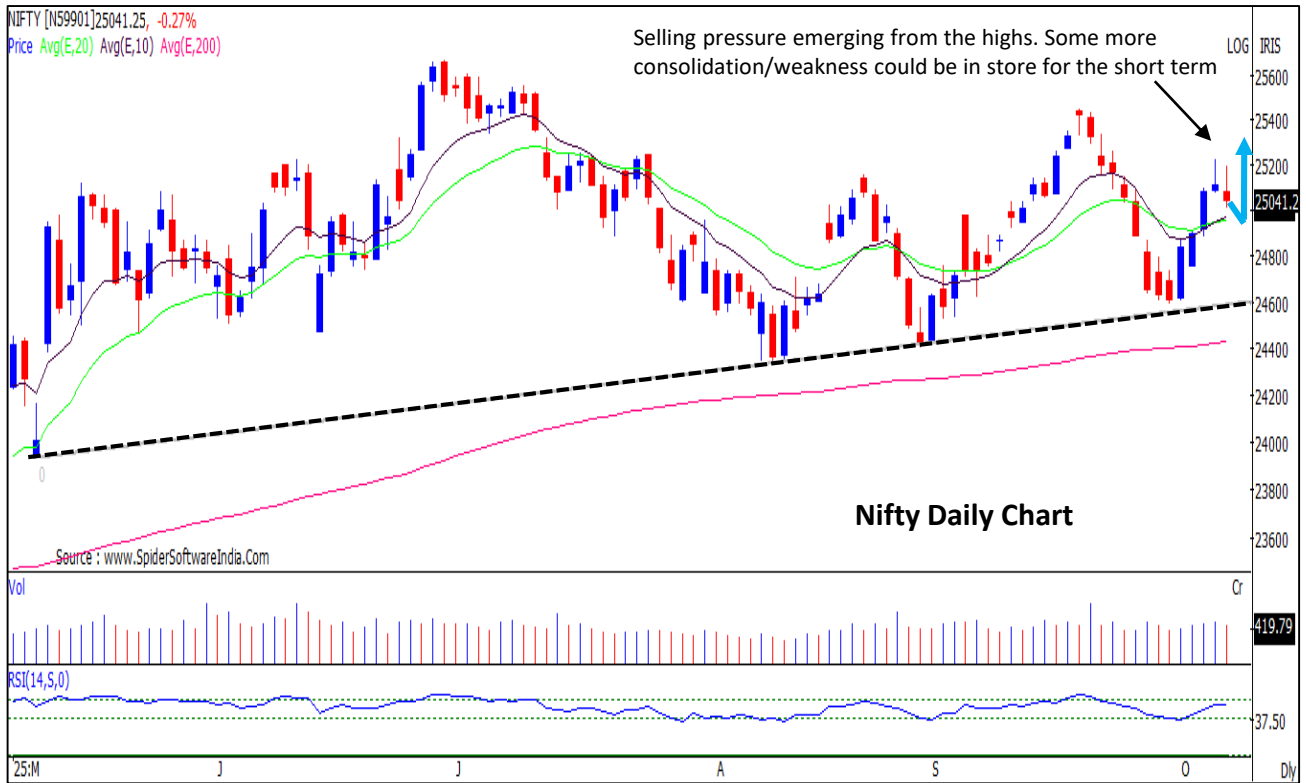
"How is the world economy coping? Short answer: better than feared, but worse than we need," the IMF chief said in a curtain raiser speech for the 2025 IMF-World Bank Annual meeting next week.

Economies of the U.S. and many other advanced and emerging markets and some developing countries have thus far been resilient to acute shocks, Georgieva observed.

U.S. Mortgage Applications Fall For Second Week, Demand For ARMs Rise: MBA

Home loan applications in the U.S. declined for a second week in a row, but at a slower pace, and there was an increase in demand for the riskier adjustable-rate mortgages as homebuyers look for best deals, survey data from the Mortgage Bankers Association showed on Wednesday. The market composite index, a measure of the house purchase mortgage loan application volume, fell a seasonally adjusted 4.7 percent in the week ended October 3 after a 12.7 percent slump in the previous week.

Nifty : Consolidation or minor dip is expected to end soon around 25000-24900 levels. Buy on dip opportunity in the markets



Nifty IT: Formation of crucial bottom reversal. Expecting more upside in the midcap and frontline IT stocks ahead

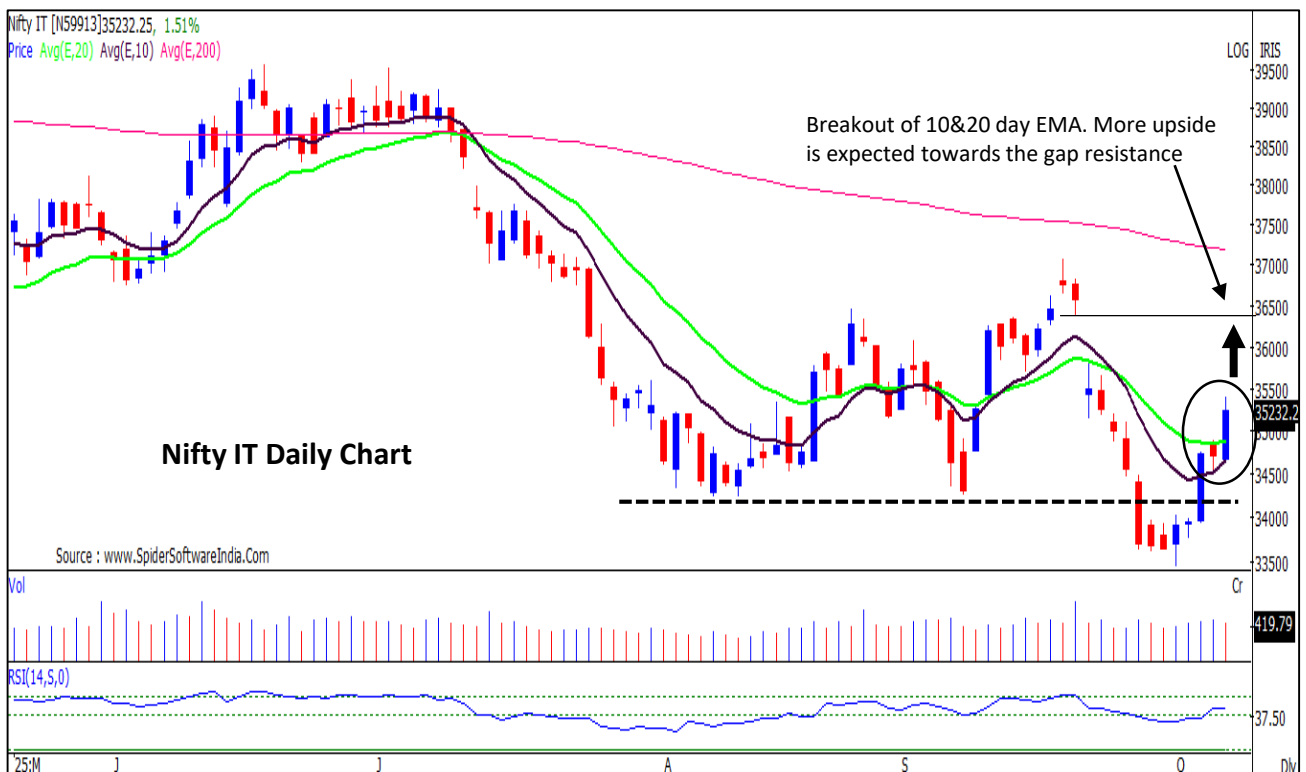


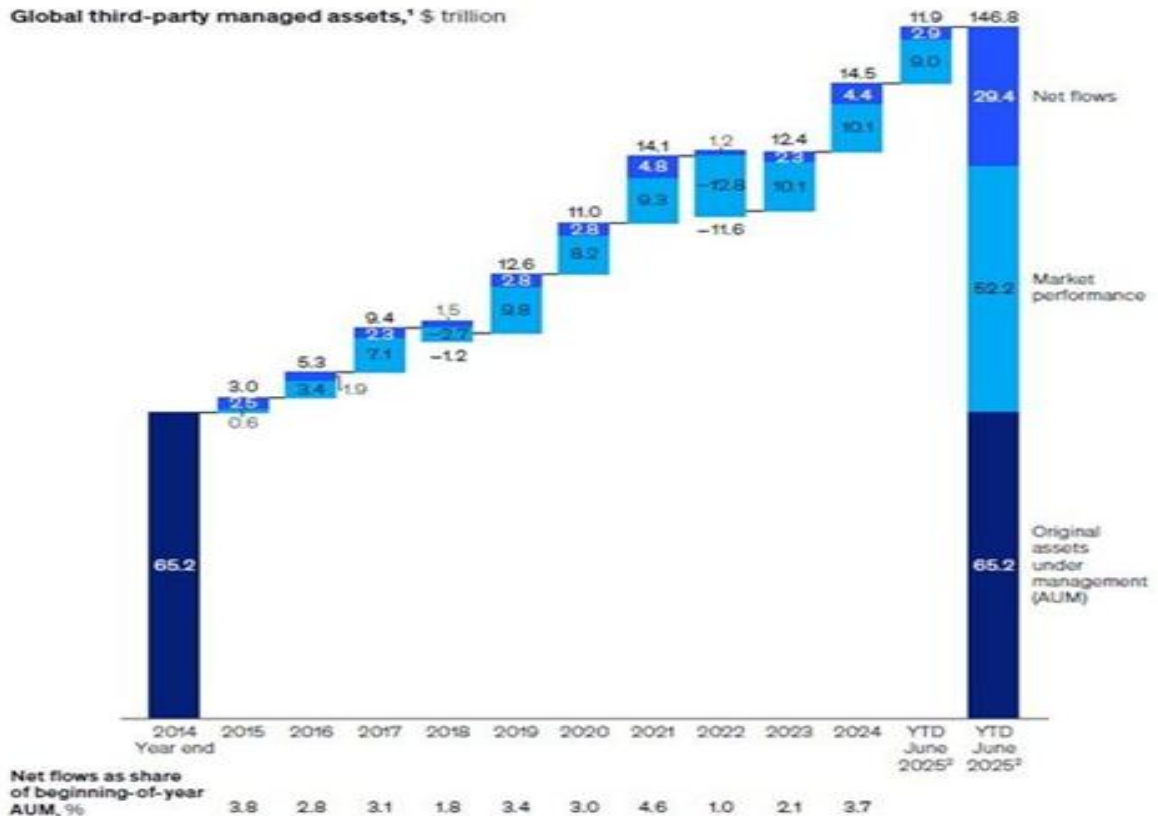
CHART WITH INTERESTING OBSERVATION

Global AUM reached an All time High of \$ 147 Trillion

- Over the past decade, global Assets Under Management (AUM) held by asset managers have grown significantly, increasing by a factor of 2.2x. This means that if total AUM was \$65 trillion in 2015, it has grown to approximately \$147 trillion in 2025. However, a closer look at the drivers of this growth reveals that the majority of it—around 65% of the increase—has come from market performance rather than new capital inflows. This includes gains from rising asset prices, dividends, interest, and reinvestments, and currently accounts for about 36% of today's total AUM.
- In contrast, only about 20% of today's total AUM is attributable to cumulative net flows, meaning the actual inflow of new investor capital over the decade has been modest. This translates to a compound annual growth rate (CAGR) of just 3% in net flows, measured as a percentage of beginning-of-year AUMs.

Global Third-Party Managed Assets (\$ Trillion)

Global third-party managed assets,* \$ trillion



F&O Highlights

LONG UNWINDING WAS SEEN IN NIFTY & BANKNIFTY FUTURES

Create longs on decline with the SL of 24950 levels.

- After witnessing profit-booking from yesterday's high, the Nifty continued its retracement, falling 62 points (0.25%) to close at 25,046. NSE cash market volumes was lower by 9% as compared to yesterday.
- Long Unwinding was seen in the Nifty Futures where Open Interest fell by 1.37% with Nifty falling by 0.25%.
- Long Unwinding was seen in the Bank Nifty Futures where Open Interest fell by 3.51% with Bank Nifty falling by 0.39%.
- Nifty Open Interest Put Call ratio fell to 0.80 levels from 1.03 levels.
- Amongst the Nifty options (14-Oct Expiry), Call writing is seen at 25100-25200 levels, indicating Nifty is likely to find strong resistance in the vicinity of 25100-25200 levels. On the lower side, an immediate support is placed in the vicinity of 24900-25000 levels where we have seen Put writing.
- Short covering was seen by FII's in the Index Futures segment where they net bought worth 175 cr with their Open Interest going down by 172 contracts.

Index	Expected Trend	Prev. Close	Buy/Sell	Stop Loss	Target
NIFTY FUT	UP	25120.40	BUY AROUND 25050	24950	25200
BANK NIFTY FUT	UP	56218.00	BUY AROUND 56100	55800	56500

Nifty 50 Snapshot			
	08-Oct-25	07-Oct-25	% Chg.
Nifty Spot	25046.15	25108.30	-0.25
Nifty Futures	25120.40	25225.30	-0.42
Premium/ (Discount)	74.25	117.00	N.A.
Open Interest (OI)	1.91	1.94	-1.37
Nifty PCR	0.80	1.03	-22.59

Bank Nifty Snapshot			
	08-Oct-25	07-Oct-25	% Chg.
Bank Nifty Spot	56018.25	56239.35	-0.39
Bank Nifty Futures	56218.00	56468.60	-0.44
Premium/ (Discount)	199.75	229.25	N.A.
Open Interest (OI)	0.19	0.19	-3.51
Bank Nifty PCR	1.05	1.11	-5.36

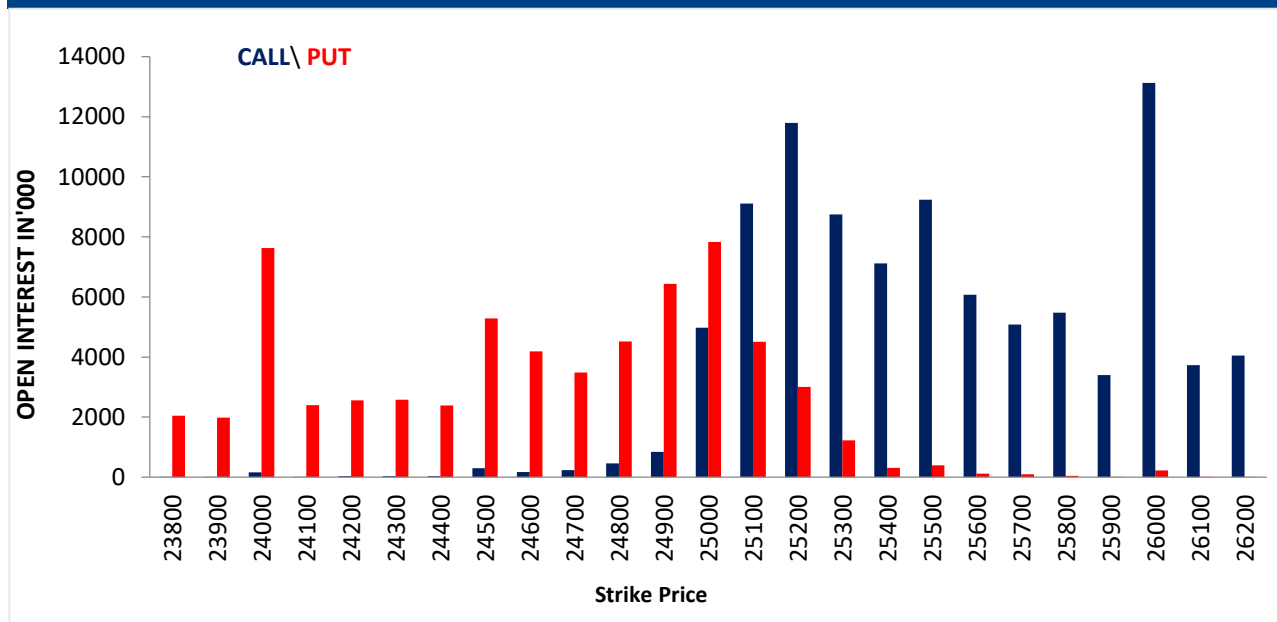
Nifty Options Highest OI (Weekly)			
CALL		PUT	
Strike Price	Open Interest (Contracts)	Strike Price	Open Interest (Contracts)
26000	175030	25000	104441

FII Activity on 08 Oct 2025

	BUY		SELL		NET	OPEN INTEREST	
	Contracts	Value (Rs Cr)	Contracts	Value (Rs Cr)	(Rs Cr)	Contracts	Value (Rs Cr)
Index Futures	12348	2363	11494	2188	175	221962	41893
Nifty Futures	7081	1337	7206	1361	-24	171877	32389
Bank Nifty Fut.	4564	900	3168	624	275	27679	5449
Index Options	6018492	1135293	6013381	1134205	1088	1593912	300842
Nifty Options	5801173	1093266	5796225	1092177	1088	1327296	249327
Bank Nifty Opt.	163790	32317	164197	32423	-106	222979	43718
Stock Futures	227260	15748	263714	18187	-2440	5596345	390815
Stock Options	323471	23280	322820	23202	79	343012	23830

FII's Open Interest (Contracts)

Date	Index Futures	Nifty Futures	Bank Nifty Futures	Index Options	Nifty Options	Bank Nifty Options	Stock Futures	Stock Options
08-Oct-25	221962	171877	27679	1593912	1327296	222979	5596345	343012
07-Oct-25	222134	170798	29031	1271011	1012110	219280	5606573	310151
NET (CONTRACTS)	-172	1079	-1352	322901	315186	3699	-10228	32861

Nifty Weekly (14 – Oct) Option Open Interest Distribution


Top Gainers OI Wise		
Company	Future OI (%)	Price (%)
POWERINDIA	76.80	1.41
RVNL	20.00	-2.34
IRFC	8.11	-2.19
IREDA	6.87	-2.49
TITAGARH	6.54	-3.05

Top Losers OI Wise		
Company	Future OI (%)	Price (%)
RBLBANK	-8.50	4.72
NUVAMA	-5.33	0.72
TITAN	-4.68	4.31
360ONE	-4.26	1.49
TATAMOTORS	-3.36	-2.36

Top Gainers Price Wise		
Company	Future OI (%)	Price (%)
RBLBANK	-8.50	4.72
TITAN	-4.68	4.31
NATIONALUM	-0.76	3.02
IIFL	-1.01	2.93
INFY	0.18	2.50

Top Losers Price Wise		
Company	Future OI (%)	Price (%)
KAYNES	4.87	-5.32
UNOMINDA	4.68	-4.02
OBEROIRLTY	4.63	-3.61
TITAGARH	6.54	-3.05
ABCAPITAL	1.58	-2.72

Long Buildup		
Company	Future OI (%)	Price (%)
POWERINDIA	76.80	1.41
PIDILITIND	2.99	1.55
TATASTEEL	2.76	0.30
SBICARD	2.66	1.66
VEDL	2.64	0.18

Short Buildup		
Company	Future OI (%)	Price (%)
RVNL	20.00	-2.34
IRFC	8.11	-2.19
IREDA	6.87	-2.49
TITAGARH	6.54	-3.05
AMBER	6.16	-2.12

Long Unwinding		
Company	Future OI (%)	Price (%)
TATAMOTORS	-3.36	-2.36
POLICYBZR	-2.90	-0.05
GAIL	-2.87	-1.32
MARUTI	-2.70	-0.60
EICHERMOT	-2.37	-0.78

Short Covering		
Company	Future OI (%)	Price (%)
RBLBANK	-8.50	4.72
NUVAMA	-5.33	0.72
TITAN	-4.68	4.31
360ONE	-4.26	1.49
AUBANK	-2.70	0.48

Securities In Ban For Trade – 09.10.2025

No.	Company Name
1.	RBLBANK

Economic Calendar

Thursday	Friday	Monday	Tuesday	Wednesday
9 Oct	10 Oct	13 Oct	14 Oct	15 Oct
US: Initial & Conti. Jobless Claims, Wholesale Inventory	Japan: PPI US: Univ. of Mich. Sentiments, Federal Budget	US, Japan: Holiday India: CPI China: Trade Balance	UK: Employment Chg India: WPI US: NFIB Busi. Optimism	China: CPI Japan, EU: IIP India: Trade Balance US: CPI, Core CPI, Empire Mfg., MBA Mortgage Application

Open Derivatives Trading Calls

NO	RECO DT	RECO	COMPANY NAME	BUY RANGE	CMP	SL	TARGET	UPSIDE %	VALID TILL
1	8-OCT-25	BUY	MIDCAP NIFTY 28TH OCT 13000 CALL OPTION	195.4	156.0	135	301	93.0	13-OCT-25
2	8-OCT-25	BUY	NIFTY 20TH OCT 25100 PUT OPTION	145	162.9	105.0	218.0	33.9	13-OCT-25
3	3-OCT-25	SELL	COAL INDIA NOV FUT	385.70-393	384.5	400.0	352.0	8.5	27-NOV-25
4	3-OCT-25	BUY	NHPC OCT FUT	87.17-85	85.4	83.5	92.0	7.7	17-OCT-25
5	6-OCT-25	BUY	ETERNAL NOV FUT	329-338.25	344.1	324.0	370.0	7.5	27-NOV-25
6	7-OCT-25	BUY	TORRENT POWER OCT FUT	1241.10-1210	1,228.2	1,197.0	1,303.0	6.1	21-OCT-25
7	7-OCT-25	BUY	UNION BANK OCT FUT	139.12-136	136.6	134.0	146.0	6.9	21-OCT-25
8	8-OCT-25	SELL	PFC OCT FUT	405.3-412	400.7	417.0	384.0	4.2	22-OCT-25

Open Short-Term MTF Calls

NO.	RECO DT.	RECO	COMPANY NAME	BUY RANGE	CMP	Lower Band	SL	TARGET	UPSIDE %	VALID TILL
1	1-OCT-25	BUY	EMBDL	97-96	93.4	93.0	91.0	103.0	10.3	15-OCT-25
2	1-OCT-25	BUY	MINDA CORP	578-584	582.2	564.0	552.0	610.0	4.8	15-OCT-25
3	3-OCT-25	BUY	HAL	4871-4896	4,789.1	4,779.0	4,702.0	5,124.0	7.0	24-OCT-25
4	6-OCT-25	BUY	PSP PROJECT	773-781	763.9	755.0	740.0	822.0	7.6	20-OCT-25
5	6-OCT-25	BUY	M&M FINANCE	282.50-284	277.2	274.5	271.0	298.0	7.5	27-OCT-25
6	7-OCT-25	BUY	TI INDIA	3215-3205	3,142.2	3,125.0	3,065.0	3,390.0	7.9	28-OCT-25
7	8-OCT-25	BUY	STAR HEALTH	479.50-483	482.1	463.0	456.0	514.0	6.6	22-OCT-25

Open Positional MTF Calls

NO.	RECO DT.	RECO	COMPANY NAME	BUY RANGE	CMP	SL	TARGET 1	TARGET 2	UPSIDE %	VALID TILL
1	18-AUG-25	BUY	INFRA BEES	942-937.80	937.0	900.0	985.0	1015	8	17-OCT-25
2	16-SEP-25	BUY	AADHAR HOUSING FINANCE	531-538	513.3	491.0	578.0	606	18	15-NOV-25
3	16-SEP-25	BUY	PHOENIX	1612-1632	1,592.3	1510.0	1727.0	1775	11	31-OCT-25
4	3-OCT-25	BUY	NELCO	896-887.45	866.7	820.0	978.0	1060	22	2-DEC-25
5	3-OCT-25	BUY	FINO PAYMENT BANK*	286-292	301.8	286.0	315.0	326	8	2-DEC-25
6	6-OCT-25	BUY	IDFC FIRST BANK	72-70.99	72.0	66.5	76.5	82	14	5-DEC-25

*= 1st Target Achieved

NSE 200 SUPPORT & RESISTANCE

SYMBOL	CLOSE	PIVOT	SUPT 2	SUPT 1	RESI 1	RESI 2	52 W H	52 W L	30 D % CHG	365 D % CHG
360ONE	1085.30	1085.27	1044.17	1064.73	1105.83	1126.37	1318.00	790.50	4.60	12.61
ABB	5128.50	5155.33	5019.83	5074.17	5209.67	5290.83	8940.60	4684.45	0.22	-33.90
ABCAPITAL	295.25	297.48	288.68	291.97	300.77	306.28	307.80	149.01	5.03	31.13
ACC	1865.60	1859.23	1831.73	1848.67	1876.17	1886.73	2404.80	1778.45	2.00	-20.58
ADANIENSOL	914.00	916.35	897.60	905.80	924.55	935.10	1090.95	588.00	20.91	-2.16
ADANIENT	2524.10	2529.70	2464.70	2494.40	2559.40	2594.70	3211.00	2025.00	10.64	-16.37
ADANIGREEN	1045.10	1047.23	1015.23	1030.17	1062.17	1079.23	1833.95	758.00	12.45	-40.36
ADANIPORTS	1394.30	1397.13	1372.03	1383.17	1408.27	1422.23	1494.00	995.65	5.48	2.89
ADANIPOWER	148.78	149.90	145.82	147.30	151.38	153.98	182.70	86.40	-75.60	-76.21
ALKEM	5493.50	5501.00	5421.50	5457.50	5537.00	5580.50	6375.55	4491.65	3.00	-10.82
AMBUJACEM	566.30	564.77	549.37	557.83	573.23	580.17	624.95	453.05	-0.07	-4.07
APLAPOLLO	1724.90	1734.33	1693.23	1709.07	1750.17	1775.43	1936.00	1272.70	3.62	10.36
APOLLOHOSP	7662.00	7689.17	7570.67	7616.33	7734.83	7807.67	7980.00	6001.00	-1.83	13.12
ASHOKLEY	139.37	139.99	137.39	138.38	140.98	142.59	144.50	95.93	6.58	-37.34
ASIANPAINT	2327.00	2327.00	2327.00	2327.00	2327.00	2327.00	3146.70	2124.75	-9.74	-23.96
ASTRAL	1406.00	1409.73	1378.93	1392.47	1423.27	1440.53	1922.45	1232.30	-3.36	-25.51
ATGL	629.25	631.62	620.42	624.83	636.03	642.82	862.00	532.60	6.58	-15.13
AUBANK	767.70	763.92	743.17	755.43	776.18	784.67	841.00	478.35	10.57	4.73
AUROPHARMA	1070.80	1080.13	1044.13	1057.47	1093.47	1116.13	1520.05	1010.00	2.56	-26.99
AXISBANK	1180.60	1183.17	1162.47	1171.53	1192.23	1203.87	1247.00	933.50	11.81	3.05
BAJAJ-AUTO	8792.00	8815.17	8662.67	8727.33	8879.83	8967.67	12030.95	7089.35	-3.22	-24.32
BAJAJFINSV	2013.60	2018.93	1985.73	1999.67	2032.87	2052.13	2135.00	1551.65	-0.04	7.15
BAJAJHFL	110.55	110.72	109.50	110.03	111.25	111.94	159.62	103.10	-1.48	-18.73
BAJAJHLDNG	12093.00	12127.00	11869.00	11981.00	12239.00	12385.00	14763.00	10004.85	-6.44	17.01
BAJFINANCE	1023.15	1021.07	1005.12	1014.13	1030.08	1037.02	1036.00	645.10	9.12	-85.93
BANKBARODA	261.90	261.20	256.50	259.20	263.90	265.90	272.05	190.70	11.80	7.92
BANKINDIA	124.83	125.07	122.08	123.46	126.45	128.06	130.24	90.05	10.89	18.30
BDL	1495.30	1507.37	1464.57	1479.93	1522.73	1550.17	2096.60	890.00	3.60	34.80
BEL	403.65	406.25	397.35	400.50	409.40	415.15	436.00	240.25	8.86	50.98
BHARATFORG	1191.00	1198.33	1160.33	1175.67	1213.67	1236.33	1526.90	919.10	4.78	-16.94
BHARTIARTL	1943.50	1944.57	1909.57	1926.53	1961.53	1979.57	2045.80	1511.00	2.54	16.93
BHARTIHEXA	1740.40	1747.07	1703.47	1721.93	1765.53	1790.67	2052.90	1234.00	-0.32	25.59
BHEL	239.04	240.78	232.95	235.99	243.82	248.61	275.55	176.00	12.56	-6.86
BIOCON	349.00	350.28	342.23	345.62	353.67	358.33	406.00	291.00	-4.04	2.65
BLUESTARCO	1892.40	1892.13	1836.13	1864.27	1920.27	1948.13	2417.00	1521.00	-2.63	-2.23
BOSCHLTD	38350.00	38516.67	37826.67	38088.33	38778.33	39206.67	41945.00	25921.60	-6.26	4.26
BPCL	345.10	344.87	334.37	339.73	350.23	355.37	358.65	234.01	10.43	3.01
BRITANNIA	5836.00	5846.50	5746.00	5791.00	5891.50	5947.00	6336.00	4506.00	-3.95	-4.65
BSE	2244.20	2239.50	2185.20	2214.70	2269.00	2293.80	3030.00	1227.33	-3.25	-41.35
CANBK	126.04	126.43	122.58	124.31	128.16	130.28	128.55	78.60	17.64	21.79
CGPOWER	743.95	743.28	729.98	736.97	750.27	756.58	874.70	517.70	1.04	-2.00
CHOLAFIN	1607.30	1613.13	1585.43	1596.37	1624.07	1640.83	1684.40	1168.00	7.81	8.72
CIPLA	1494.60	1501.57	1473.07	1483.83	1512.33	1530.07	1702.05	1335.00	-3.79	-8.00
COALINDIA	382.10	383.20	377.90	380.00	385.30	388.50	502.45	349.25	-2.69	-20.47
COCHINSHIP	1796.80	1809.77	1757.27	1777.03	1829.53	1862.27	2545.00	1180.20	8.75	14.52
COFORGE	1713.70	1706.73	1646.83	1680.27	1740.17	1766.63	2005.36	1194.01	3.34	-76.23
COLPAL	2217.60	2216.13	2187.33	2202.47	2231.27	2244.93	3774.95	2151.00	-8.49	-39.99
CONCOR	528.25	531.73	518.78	523.52	536.47	544.68	726.36	481.00	-2.58	-39.16
COROMANDEL	2242.40	2254.27	2195.47	2218.93	2277.73	2313.07	2718.90	1545.65	-0.69	43.17
CUMMINSIND	3912.50	3919.87	3837.77	3875.13	3957.23	4001.97	4168.70	2580.00	-0.62	8.95

NSE 200 SUPPORT & RESISTANCE

SYMBOL	CLOSE	PIVOT	SUPT 2	SUPT 1	RESI 1	RESI 2	52 W H	52 W L	30 D % CHG	365 D % CHG
DABUR	480.15	484.17	470.12	475.13	489.18	498.22	579.35	433.30	-12.17	-15.67
DIVISLAB	6120.50	6164.00	6000.50	6060.50	6224.00	6327.50	7071.50	4955.00	1.86	13.25
DIXON	16859.00	16993.00	16515.00	16687.00	17165.00	17471.00	19148.90	12202.20	-5.58	24.79
DLF	724.90	728.17	713.47	719.18	733.88	742.87	896.60	601.20	-4.06	-12.20
DMART	4294.40	4295.13	4240.13	4267.27	4322.27	4350.13	4949.50	3340.00	-10.41	-5.50
DRREDDY	1234.50	1238.97	1219.37	1226.93	1246.53	1258.57	1405.90	1020.00	-2.65	-81.32
EICHERMOT	6902.50	6933.00	6815.50	6859.00	6976.50	7050.50	7122.50	4508.75	4.89	47.87
ENRIN	3342.20	3318.40	3225.40	3283.80	3376.80	3411.40	3625.00	2508.80	-2.44	-
ETERNAL	341.65	340.20	333.35	337.50	344.35	347.05	343.90	194.80	3.80	-
EXIDEIND	398.35	399.85	390.65	394.50	403.70	409.05	534.40	328.00	-3.49	-17.10
FEDERALBNK	202.61	201.82	197.67	200.14	204.29	205.97	220.00	172.66	6.35	9.99
FORTIS	1055.35	1052.20	1033.55	1044.45	1063.10	1070.85	1060.10	572.00	11.34	81.94
GAIL	177.52	178.65	174.48	176.00	180.17	182.82	234.50	150.52	2.04	-20.73
GLENMARK	1929.30	1940.23	1891.63	1910.47	1959.07	1988.83	2284.80	1275.50	-5.97	15.18
GMRAIRPORT	87.59	87.66	86.16	86.88	88.38	89.16	97.00	67.75	1.91	-
GODFRYPHLP	3392.40	3402.03	3348.33	3370.37	3424.07	3455.73	3947.00	1370.82	-69.36	-47.05
GODREJCP	1130.70	1132.53	1105.63	1118.17	1145.07	1159.43	1366.60	979.50	-8.19	-15.13
GODREJPROP	2033.40	2046.70	1986.20	2009.80	2070.30	2107.20	3239.65	1900.00	3.65	-28.80
GRASIM	2778.20	2788.77	2730.07	2754.13	2812.83	2847.47	2911.00	2276.95	-0.92	2.12
HAL	4789.10	4802.17	4710.57	4749.83	4841.43	4893.77	5165.00	3046.05	8.72	14.96
HAVELLS	1503.50	1498.87	1473.97	1488.73	1513.63	1523.77	1971.80	1381.30	-4.99	-21.47
HCLTECH	1451.00	1451.00	1451.00	1451.00	1451.00	1451.00	2012.20	1302.75	2.41	-18.22
HDFCAMC	5475.50	5494.33	5369.83	5422.67	5547.17	5618.83	5927.50	3563.05	-1.74	32.49
HDFCBANK	978.70	979.72	968.37	973.53	984.88	991.07	1018.85	811.00	1.59	-39.50
HDFCLIFE	747.30	749.02	734.67	740.98	755.33	763.37	820.75	584.30	-1.61	5.87
HEROMOTOCO	5512.50	5554.67	5388.17	5450.33	5616.83	5721.17	5659.00	3344.00	2.79	0.20
HINDALCO	768.20	771.95	756.60	762.40	777.75	787.30	790.60	546.45	3.28	5.05
HINDPETRO	457.30	457.43	446.43	451.87	462.87	468.43	465.20	287.55	19.21	16.17
HINDUNILVR	2500.10	2503.73	2464.83	2482.47	2521.37	2542.63	2886.00	2136.00	-5.06	-11.76
HINDZINC	490.50	491.43	482.93	486.72	495.22	499.93	575.40	378.15	11.45	-0.99
HUDCO	225.68	227.55	220.57	223.13	230.11	234.53	262.70	158.85	4.78	7.31
HYUNDAI	2473.80	2492.80	2398.40	2436.10	2530.50	2587.20	2890.00	1541.70	-2.67	-
ICICIBANK	1370.30	1372.07	1354.77	1362.53	1379.83	1389.37	1500.00	1186.00	-2.32	11.05
ICICIGI	1878.10	1890.37	1846.57	1862.33	1906.13	1934.17	2145.00	1613.70	2.05	-10.60
IDEA	9.04	9.15	8.75	8.89	9.29	9.55	10.47	6.12	25.03	-1.31
IDFCFIRSTB	72.45	72.45	72.45	72.45	72.45	72.45	78.45	52.46	-0.84	-0.32
IGL	217.33	218.71	210.52	213.93	222.12	226.90	274.60	153.05	2.02	-59.91
INDHOTEL	730.00	731.28	723.53	726.77	734.52	739.03	894.90	649.00	-5.78	11.78
INDIANB	760.60	760.42	749.57	755.08	765.93	771.27	773.60	473.90	14.51	46.65
INDIGO	5635.00	5647.83	5589.33	5612.17	5670.67	5706.33	6232.50	3780.00	-0.62	25.64
INDUSINDBK	740.95	744.73	729.78	735.37	750.32	759.68	1374.45	606.00	-2.13	-45.15
INDUSTOWER	354.75	356.35	349.65	352.20	358.90	363.05	430.00	312.55	5.14	-1.77
INFY	1495.00	1482.67	1439.67	1467.33	1510.33	1525.67	2006.45	1307.00	3.49	-22.71
IOC	153.57	154.41	151.51	152.54	155.44	157.31	171.65	110.72	9.97	-5.63
IRB	41.79	41.98	41.25	41.52	42.25	42.71	61.99	40.51	-1.25	-25.32
IRCTC	703.15	707.15	691.65	697.40	712.90	722.65	900.40	656.00	-1.53	-18.02
IREDA	148.64	150.01	145.42	147.03	151.62	154.60	239.90	137.01	2.15	-29.60
IRFC	124.30	125.28	121.75	123.02	126.55	128.81	166.90	108.04	0.68	-13.89
ITC	399.75	399.83	396.08	397.92	401.67	403.58	512.55	390.15	-1.87	-21.65
ITCHOTELS	214.81	215.60	209.80	212.31	218.11	221.40	261.62	155.10	-11.89	-

NSE 200 SUPPORT & RESISTANCE

SYMBOL	CLOSE	PIVOT	SUPT 2	SUPT 1	RESI 1	RESI 2	52 W H	52 W L	30 D % CHG	365 D % CHG
JINDALSTEL	1019.20	1025.07	1001.07	1010.13	1034.13	1049.07	1087.60	723.35	-1.51	1.86
JIOFIN	304.65	306.60	299.85	302.25	309.00	313.35	349.70	198.65	-1.54	-9.42
JSWENERGY	534.45	537.50	519.65	527.05	544.90	555.35	776.90	418.75	6.02	-20.73
JSWSTEEL	1145.20	1150.20	1130.20	1137.70	1157.70	1170.20	1175.80	880.00	6.72	12.41
JUBLFOOD	603.00	607.08	593.03	598.02	612.07	621.13	796.75	558.25	-8.08	-2.49
KALYANKJIL	481.95	486.17	469.92	475.93	492.18	502.42	795.40	399.40	-3.98	-31.37
KEI	4254.90	4240.70	4113.90	4184.40	4311.20	4367.50	4725.00	2424.00	5.38	3.58
KOTAKBANK	2117.80	2120.83	2100.53	2109.17	2129.47	2141.13	2301.90	1679.05	8.86	18.30
KPITTECH	1160.80	1165.43	1132.93	1146.87	1179.37	1197.93	1822.90	1020.60	-5.86	-31.96
LICHSGFIN	562.05	564.83	555.38	558.72	568.17	574.28	657.60	483.70	1.42	-7.48
LICI	893.80	898.83	876.43	885.12	907.52	921.23	1007.80	715.30	1.87	-4.00
LODHA	1128.70	1137.90	1102.90	1115.80	1150.80	1172.90	1531.00	1035.15	-3.93	-5.00
LT	3749.00	3749.00	3749.00	3749.00	3749.00	3749.00	3963.50	2965.30	4.96	7.54
LTF	255.55	256.77	250.64	253.10	259.23	262.90	264.70	129.20	10.86	51.66
LTIM	5342.50	5334.00	5206.50	5274.50	5402.00	5461.50	6767.95	3802.00	2.83	-14.59
LUPIN	1905.60	1916.20	1875.20	1890.40	1931.40	1957.20	2402.90	1795.20	-1.97	-12.38
M&M	3426.50	3452.93	3365.83	3396.17	3483.27	3540.03	3723.80	2425.00	-3.79	11.97
M&MFIN	277.15	278.80	271.55	274.35	281.60	286.05	295.34	231.02	-87.34	-86.48
MANKIND	2454.90	2463.80	2413.10	2434.00	2484.70	2514.50	3054.80	2115.10	-3.75	-4.17
MARICO	710.80	710.58	703.63	707.22	714.17	717.53	759.00	577.85	-2.86	4.71
MARUTI	16012.00	16075.67	15818.67	15915.33	16172.33	16332.67	16435.00	10725.00	7.50	27.81
MAXHEALTH	1144.40	1139.93	1120.53	1132.47	1151.87	1159.33	1314.30	888.90	-2.19	24.88
MAZDOCK	2814.70	2835.17	2755.97	2785.33	2864.53	2914.37	3775.00	1918.05	5.39	-28.18
MFSL	1568.70	1576.90	1544.70	1556.70	1588.90	1609.10	1674.80	950.00	-0.55	36.21
MOTHERSON	101.64	102.60	98.87	100.26	103.99	106.33	143.91	71.50	7.44	-48.94
MOTILALOFS	923.95	926.62	910.72	917.33	933.23	942.52	1064.00	513.00	5.83	31.26
MPHASIS	2799.80	2822.27	2719.27	2759.53	2862.53	2925.27	3237.95	2044.55	0.09	-2.60
MRF	155210	155953	148303	151757	159407	163603	160150	102124	4.80	18.27
MUTHOOTFIN	3263.10	3252.40	3198.30	3230.70	3284.80	3306.50	3274.10	1756.05	14.98	73.38
NATIONALUM	223.62	222.64	214.44	219.03	227.23	230.84	262.99	137.75	5.41	4.06
NAUKRI	1367.50	1373.10	1348.90	1358.20	1382.40	1397.30	1825.78	1157.00	1.52	-82.88
NESTLEIND	1180.50	1173.87	1149.97	1165.23	1189.13	1197.77	1297.00	1055.00	-2.32	-54.13
NHPC	85.44	85.73	83.97	84.70	86.46	87.49	93.19	71.00	9.79	-5.56
NMDC	76.23	76.49	74.93	75.58	77.14	78.05	82.83	59.53	2.28	-66.67
NTPC	333.80	335.12	328.17	330.98	337.93	342.07	429.90	292.80	1.55	-19.65
NTPCGREEN	98.55	98.61	97.88	98.21	98.94	99.34	155.35	84.55	-5.30	-
NYKAA	257.42	257.53	251.40	254.41	260.54	263.66	265.60	154.90	6.09	32.66
OBEROIRLTY	1577.50	1591.60	1521.30	1549.40	1619.70	1661.90	2343.65	1451.95	-3.14	-9.76
OFSS	9189.50	9202.50	8990.50	9090.00	9302.00	9414.50	13220.00	7038.00	10.98	-16.03
OIL	416.80	418.45	409.90	413.35	421.90	427.00	594.00	325.00	5.15	-23.85
ONGC	241.81	243.25	237.59	239.70	245.36	248.91	293.90	205.00	3.28	-16.46
PAGEIND	41700.00	41660.00	40910.00	41305.00	42055.00	42410.00	50590.00	38850.00	-5.84	0.68
PATANJALI	598.20	597.07	590.27	594.23	601.03	603.87	670.33	523.33	-66.57	-63.31
PAYTM	1224.90	1231.80	1196.50	1210.70	1246.00	1267.10	1296.60	651.50	-2.38	87.91
PERSISTENT	5263.60	5269.23	5143.33	5203.47	5329.37	5395.13	6788.90	4148.95	2.56	0.64
PFC	400.00	402.62	391.47	395.73	406.88	413.77	523.90	357.25	1.42	-8.81
PHOENIXLTD	1592.30	1599.70	1569.30	1580.80	1611.20	1630.10	1902.00	1338.05	4.89	-4.87
PIDILITIND	1493.70	1484.73	1448.23	1470.97	1507.47	1521.23	1652.20	1311.10	-51.74	-52.63
PIIND	3497.60	3528.53	3406.53	3452.07	3574.07	3650.53	4715.00	2951.10	-4.54	-22.23
PNB	113.14	113.21	110.75	111.95	114.41	115.67	115.71	85.46	9.05	10.85

NSE 200 SUPPORT & RESISTANCE

SYMBOL	CLOSE	PIVOT	SUPT 2	SUPT 1	RESI 1	RESI 2	52 W H	52 W L	30 D % CHG	365 D % CHG
POLICYBZR	1769.00	1769.00	1769.00	1769.00	1769.00	1769.00	2246.90	1311.35	-3.20	4.34
POLYCAB	7588.00	7595.50	7444.00	7516.00	7667.50	7747.00	7714.00	4555.00	4.98	7.22
POWERGRID	285.30	286.77	281.07	283.18	288.88	292.47	345.40	247.30	-0.02	-13.27
POWERINDIA	17794.00	17845.33	17201.33	17497.67	18141.67	18489.33	21800.00	8801.00	-5.60	30.42
PREMIERENE	1019.10	1018.07	1003.37	1011.23	1025.93	1032.77	1388.00	774.05	1.88	2.20
PRESTIGE	1513.80	1517.60	1488.60	1501.20	1530.20	1546.60	1909.85	1048.05	0.22	-12.98
RECLTD	372.50	374.60	367.30	369.90	377.20	381.90	573.30	348.60	1.73	-25.52
RELIANCE	1367.40	1373.63	1349.13	1358.27	1382.77	1398.13	1551.00	1114.85	-0.55	-50.12
RVNL	346.55	349.45	336.45	341.50	354.50	362.45	514.65	301.60	5.21	-23.28
SAIL	131.72	131.61	128.71	130.21	133.11	134.51	139.98	99.15	1.90	-0.36
SBICARD	920.20	921.70	890.60	905.40	936.50	952.80	1027.25	659.80	16.27	25.89
SBILIFE	1772.90	1775.50	1737.30	1755.10	1793.30	1813.70	1912.00	1372.55	-1.79	-0.84
SBIN	861.50	861.50	861.50	861.50	861.50	861.50	880.50	680.00	6.40	11.37
SHREECEM	29285.00	29381.67	28861.67	29073.33	29593.33	29901.67	32490.00	23500.00	-2.51	15.40
SHRIRAMFIN	666.90	667.40	656.10	661.50	672.80	678.70	717.50	493.35	12.56	-79.79
SIEMENS	3216.80	3229.90	3162.80	3189.80	3256.90	3297.00	8129.90	2450.00	4.13	-54.03
SOLARINDS	14007.00	14061.67	13763.67	13885.33	14183.33	14359.67	17820.00	8482.50	0.66	30.11
SONACOMS	405.25	409.22	395.52	400.38	414.08	422.92	744.90	380.00	-8.13	-40.00
SRF	2972.70	2983.60	2918.30	2945.50	3010.80	3048.90	3325.00	2126.85	4.24	28.81
SUNPHARMA	1631.60	1638.53	1612.53	1622.07	1648.07	1664.53	1947.00	1548.00	2.38	-14.36
SUPREMEIND	4154.40	4173.63	4091.13	4122.77	4205.27	4256.13	5580.00	3095.00	-9.25	-23.53
SUZLON	52.77	53.19	51.71	52.24	53.72	54.67	80.60	46.15	-8.81	-25.60
SWIGGY	420.90	420.28	413.33	417.12	424.07	427.23	617.30	297.00	-4.13	-
TATACOMM	1689.20	1685.43	1636.53	1662.87	1711.77	1734.33	2024.00	1291.00	9.01	-14.69
TATACONSUM	1120.20	1118.97	1102.27	1111.23	1127.93	1135.67	1180.50	882.90	4.46	0.79
TATAELXSI	5460.00	5453.17	5246.67	5353.33	5559.83	5659.67	8027.00	4700.00	0.17	-26.52
TATAMOTORS	681.55	687.52	664.52	673.03	696.03	710.52	948.45	535.75	-1.47	-26.55
TATAPOWER	385.45	387.70	378.55	382.00	391.15	396.85	477.90	326.35	-0.09	-12.66
TATASTEEL	171.94	171.88	168.31	170.12	173.69	175.45	174.74	122.62	2.54	4.61
TATATECH	708.55	711.22	698.42	703.48	716.28	724.02	1089.15	597.00	5.42	-30.93
TCS	3027.20	3012.73	2937.73	2982.47	3057.47	3087.73	4494.90	2866.60	-0.69	-29.15
TECHM	1458.20	1454.37	1413.67	1435.93	1476.63	1495.07	1807.70	1209.40	-1.33	-9.91
TIINDIA	3142.20	3171.27	3060.87	3101.53	3211.93	3281.67	4810.80	2407.10	5.07	-21.89
TITAN	3565.60	3535.20	3415.20	3490.40	3610.40	3655.20	3740.00	2925.00	-2.72	-0.66
TORNTPHARM	3569.00	3555.27	3486.67	3527.83	3596.43	3623.87	3787.90	2886.45	-0.28	4.81
TORNTPOWER	1225.00	1233.03	1201.13	1213.07	1244.97	1264.93	2037.00	1188.00	-3.00	-31.92
TRENT	4616.60	4656.33	4516.73	4566.67	4706.27	4795.93	8345.00	4488.00	-16.49	-38.03
TVSMOTOR	3483.00	3497.40	3436.60	3459.80	3520.60	3558.20	3602.70	2171.40	0.18	32.04
ULTRACEMCO	11991.00	12037.67	11795.67	11893.33	12135.33	12279.67	13097.00	10047.85	-4.84	6.77
UNIONBANK	136.02	137.00	133.47	134.74	138.27	140.53	158.65	100.81	6.82	19.27
UNITDSPR	1333.10	1336.80	1310.50	1321.80	1348.10	1363.10	1700.00	1271.10	1.60	-11.50
UPL	674.80	677.67	662.57	668.68	683.78	692.77	741.00	484.90	-2.04	16.28
VBL	434.85	435.78	426.58	430.72	439.92	444.98	663.60	419.55	-7.41	-19.78
VEDL	472.70	472.08	459.73	466.22	478.57	484.43	526.95	363.00	6.11	-5.52
VMM	150.17	149.76	147.86	149.01	150.91	151.66	157.60	95.99	-1.51	-
VOLTAS	1367.30	1361.90	1326.30	1346.80	1382.40	1397.50	1902.00	1135.00	-4.57	-22.19
WAAREEENER	3323.40	3345.47	3258.47	3290.93	3377.93	3432.47	3865.00	1863.00	3.23	-
WIPRO	244.27	244.40	240.62	242.44	246.22	248.18	324.60	228.00	0.25	-54.04
YESBANK	22.17	22.17	22.17	22.17	22.17	22.17	23.39	16.02	7.83	3.67
ZYDUSLIFE	985.95	987.03	975.68	980.82	992.17	998.38	1071.75	795.00	-2.75	-6.16

Disclosure & Disclaimer :

HDFC Securities Limited (HSL) is a SEBI Registered Research Analyst having registration no. INH000002475.

This report has been prepared by HDFC Securities Ltd and is solely for information of the recipient only. The report must not be used as a singular basis of any investment decision. The views herein are of a general nature and do not consider the risk appetite or the particular circumstances of an individual investor; readers are requested to take professional advice before investing. "This report may have been refined using AI tools to enhance clarity and readability."

Nothing in this document should be construed as investment advice. Each recipient of this document should make such investigations as they deem necessary to arrive at an independent evaluation of an investment in securities of the companies referred to in this document (including merits and risks) and should consult their own advisors to determine merits and risks of such investment. The information and opinions contained herein have been compiled or arrived at, based upon information obtained in good faith from sources believed to be reliable. Such information has not been independently verified and no guaranty, representation of warranty, express or implied, is made as to its accuracy, completeness or correctness. All such information and opinions are subject to change without notice. Descriptions of any company or companies or their securities mentioned herein are not intended to be complete. HSL is not obliged to update this report for such changes. HSL has the right to make changes and modifications at any time.

This report is not directed to, or intended for display, downloading, printing, reproducing or for distribution to or use by, any person or entity who is a citizen or resident or located in any locality, state, country or other jurisdiction where such distribution, publication, reproduction, availability or use would be contrary to law or regulation or what would subject HSL or its affiliates to any registration or licensing requirement within such jurisdiction.

If this report is inadvertently sent or has reached any person in such country, especially, United States of America, the same should be ignored and brought to the attention of the sender. This document may not be reproduced, distributed or published in whole or in part, directly or indirectly, for any purposes or in any manner.

Foreign currencies denominated securities, wherever mentioned, are subject to exchange rate fluctuations, which could have an adverse effect on their value or price, or the income derived from them. In addition, investors in securities such as ADRs, the values of which are influenced by foreign currencies effectively assume currency risk. It should not be considered to be taken as an offer to

sell or a solicitation to buy any security.

This document is not, and should not, be construed as an offer or solicitation of an offer, to buy or sell any securities or other financial instruments. This report should not be construed as an invitation or solicitation to do business with HSL. HSL may from time to time solicit from, or perform broking, or other services for, any company mentioned in this mail and/or its attachments.

HSL and its affiliated company(ies), their directors and employees may; (a) from time to time, have a long or short position in, and buy or sell the securities of the company(ies) mentioned herein or (b) be engaged in any other transaction involving such securities and earn brokerage or other compensation or act as a market maker in the financial instruments of the company(ies) discussed herein or act as an advisor or lender/borrower to such company(ies) or may have any other potential conflict of interests with respect to any recommendation and other related information and opinions.

HSL, its directors, analysts or employees do not take any responsibility, financial or otherwise, of the losses or the damages sustained due to the investments made or any action taken on basis of this report, including but not restricted to, fluctuation in the prices of shares and bonds, changes in the currency rates, diminution in the NAVs, reduction in the dividend or income, etc.

HSL and other group companies, its directors, associates, employees may have various positions in any of the stocks, securities and financial instruments dealt in the report, or may make sell or purchase or other deals in these securities from time to time or may deal in other securities of the companies / organizations described in this report. As regards the associates of HSL please refer the website.

HSL or its associates might have managed or co-managed public offering of securities for the subject company or might have been mandated by the subject company for any other assignment in the past twelve months.

Please note that HDFC Securities has a proprietary trading desk. This desk maintains an arm's length distance with the Research team and all its activities are segregated from Research activities. The proprietary desk operates independently, potentially leading to investment decisions that may deviate from research views.

HSL or its associates might have received any compensation from the companies mentioned in the report during the period preceding twelve months from the date of this report for services in respect of managing or co-managing public offerings, corporate finance, investment banking or merchant banking, brokerage services or other advisory service in a merger or specific transaction in the normal course of business.

HSL or its analysts did not receive any compensation or other benefits from the companies mentioned in the report or third party in connection with preparation of the research report. Accordingly, neither HSL nor Research Analysts have any material conflict of interest at the time of publication of this report. Compensation of our Research Analysts is not based on any specific merchant banking, investment banking or brokerage service transactions. HSL may have issued other reports that are inconsistent with and reach different conclusion from the information presented in this report.

Research entity has not been engaged in market making activity for the subject company. Research analyst has not served as an officer, director or employee of the subject company. We have not received any compensation/benefits from the subject company or third party in connection with the Research Report.

HDFC securities Limited, I Think Techno Campus, Building - B, "Alpha", Office Floor 8, Near Kanjurmarg Station, Opp. Crompton Greaves, Kanjurmarg (East), Mumbai 400 042 Phone: (022) 3075 3400 Fax: (022) 2496 5066

Compliance Officer: Murli V Karkera Email: complianceofficer@hdfcsec.com Phone: (022) 3045 3600

For grievance redressal contact Customer Care Team Email: customercare@hdfcsec.com Phone: (022) 3901 9400

HDFC Securities Limited, SEBI Reg. No.: NSE, BSE, MSEI, MCX: INZ000186937; AMFI Reg. No. ARN: 13549; PFRDA Reg. No. POP: 11092018; IRDA Corporate Agent License No.: CA0062; SEBI Research Analyst Reg. No.: INH000002475; SEBI Investment Adviser Reg. No.: INA000011538; CIN - U67120MH2000PLC152193

Investment in securities market are subject to market risks. Read all the related documents carefully before investing.

Mutual Funds Investments are subject to market risk. Please read the offer and scheme related documents carefully before investing.

Registration granted by SEBI, membership of BASL (in case of IAs) and certification from NISM in no way guarantee performance of the intermediary or provide any assurance of returns to investors.